

The North Branch Journal

September 2014

Class Speakers Available:

Staff of NE PA community FCU are available to speak during class on a variety of subjects, including:

- Budgeting
- Balancing a checkbook
- Auto Buying 101
- Auto Loans
- College Expenses
- Interviewing Skills
- Credit Basics
- Credit Card Management
- Financial Tools
- Or have one created for your needs

Call Sharon Ortiz at (570) 421-5585 x1165 to schedule a speaker

Credit Union Student Branch Hours of Operation:

10:46 am – 12:58 pm

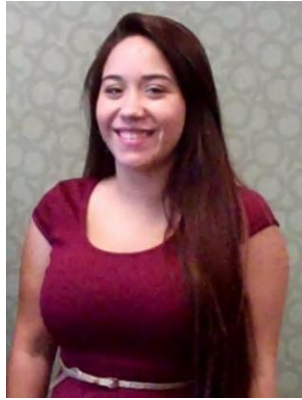
Tuesday

Thursday

Friday

(Hours are subject to change during school delays/early dismissals)

Meet Your New Student Sales Associates!



Dorimar Bernal

Dorimar, who often goes by “Dori” (pronounced, door-ee) is currently the President of the Key/Leo Club and loves to volunteer. She loves beauty, fashion and travel. She hopes to one day revisit Ecuador, the beautiful country of her father’s birth. She applied for the Student Sales Associate position to push herself beyond her current comfort zone and hopes to “break out of her shell” more as the year progresses. Dori loves Spanish music, especially Bachata and has always wanted to be able to fly. She has a hamster named Mia, and once had 17 Chihuahuas living at home. (She’s since given them away). Dori places family at the forefront of her life and she greatly admires her mother. Dori’s brother, Marc Anthony, is 16 and a junior this year.



Victoria Gordon

Victoria, like Dori, loves to volunteer and is an active member of the National Honors Society. She plays soccer for the Timberwolves and in her free time volunteers at a local nursing home. She is interested in both business and nursing as career paths, and hasn’t yet decided between the two. Victoria loves Caribbean and Chinese food, and is particularly fond of shrimp and calamari. She is interested in history, art and photography, and aspires to one day walk on the moon. Victoria is a student of astronomy and an avid Mario Kart player who hates bugs and scary movies. Victoria is quite cultured, has traveled to the Virgin Islands, Jamaica and Canada. She also enjoys Broadway shows and has even seen Tina Turner in concert!



NE PA COMMUNITY
FEDERAL CREDIT UNION
MAIN BRANCH

337 Clay Ave
Stroudsburg, PA 18360

Phone: (570) 421-5585
Fax: (570) 421-5476
Website: www.nepafcu.org
Email: mail@nepafcu.org

A Better Way to Bank!

You're Invited!

As staff members of East Stroudsburg High School South, you are invited to a complimentary consultation with

Matthew Birnbaum
CFS* Financial Advisor
At NE PA Community FCU

337 Clay Avenue
Stroudsburg, PA 18360
Office: (570) 421-5625
Work Cell: (570) 534-5111
Email: Matt.Birnbaum@cusonet.com

NE PA Financial Advisor Services

Offered through CUSO Financial Services, L.P.

Are You Looking For A Financial Advisor?

Matthew can help you establish a financial plan designed to meet your unique financial goals:

- Full Service Financial Planning
- Retirement Income
- Retirement Plan Rollovers
- Inheritance Strategies
- Educational Funding
- Reviewing Existing Investments
- Life/Disability/Long-Term Care Insurance Options
- Individual Retirement Accounts (IRAs)
- Business Retirement Accounts
- 403(b) Retirement Plans
- Fixed Rate Investment Options

* Non-deposit investment products and services are offered through CUSO Financial Services, L.P. ("CFS"), a registered broker-dealer (Member FINRA/SIPC) and SEC Registered Investment Advisor. Products offered through CFS are not NCUA/NCUSIF or otherwise federally insured, are not guarantees or obligations of the credit union, and may involve investment risk including possible loss of principal. Investment Representatives are registered through CFS. The Credit Union has contracted with CFS to make non-deposit investment products and services available to credit union members. CFS and its Registered Representatives do not provide tax advice. For such advice, please consult a qualified tax advisor.

Main Branch Announcements



Loan Special

Members can apply to borrow \$2,500 with a 12 month repayment term. Use the money to help pay for school supplies, tuition, or an unexpected expense.

But Hurry! This offer ends September 30, 2014.

Click on the "Apply Now" button.

The loan approval process is part of our Risk-Based Lending Program. Your interest rate will be determined by your credit history. Rate is subject to change without notice. Contact the credit union for complete details.