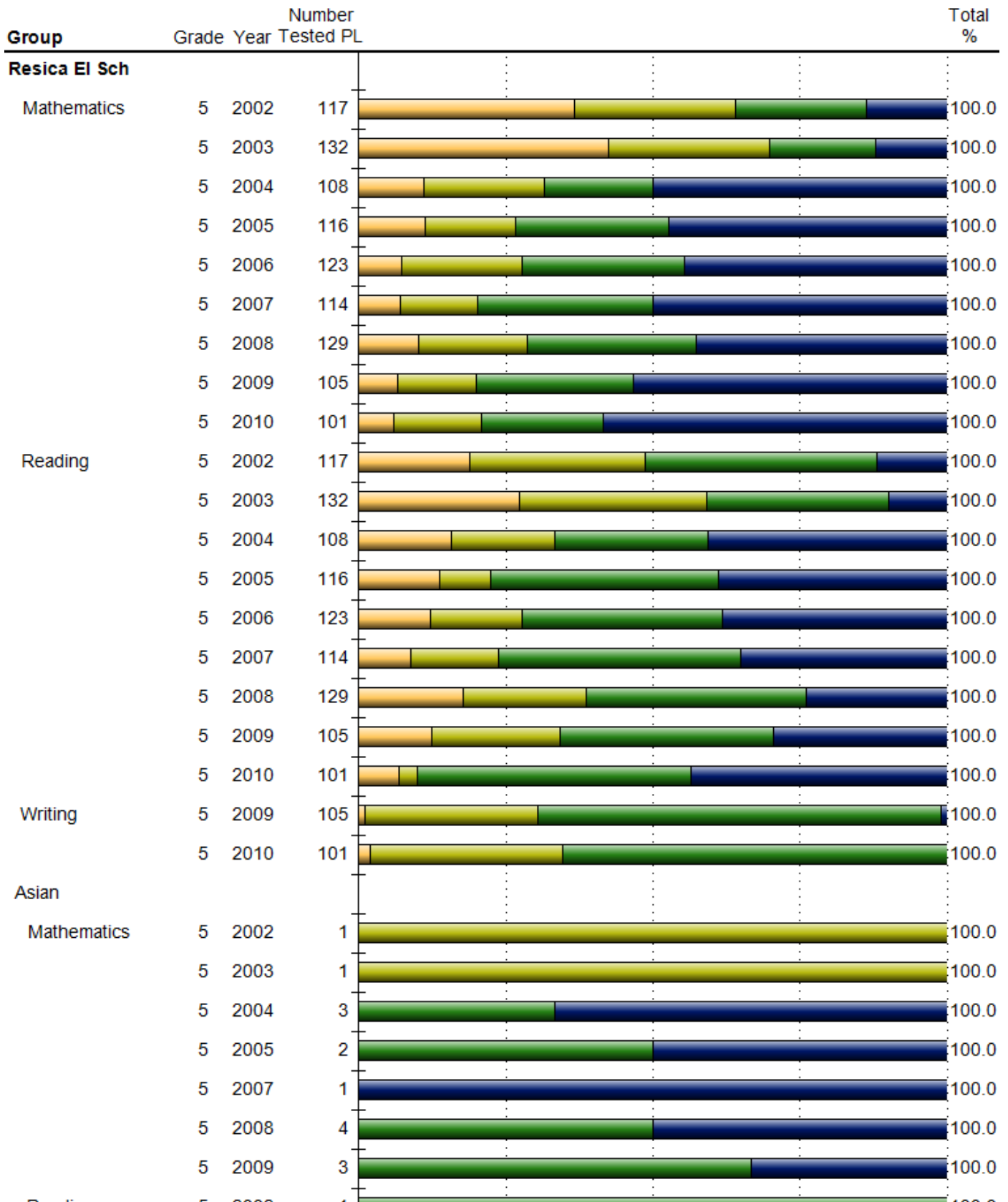


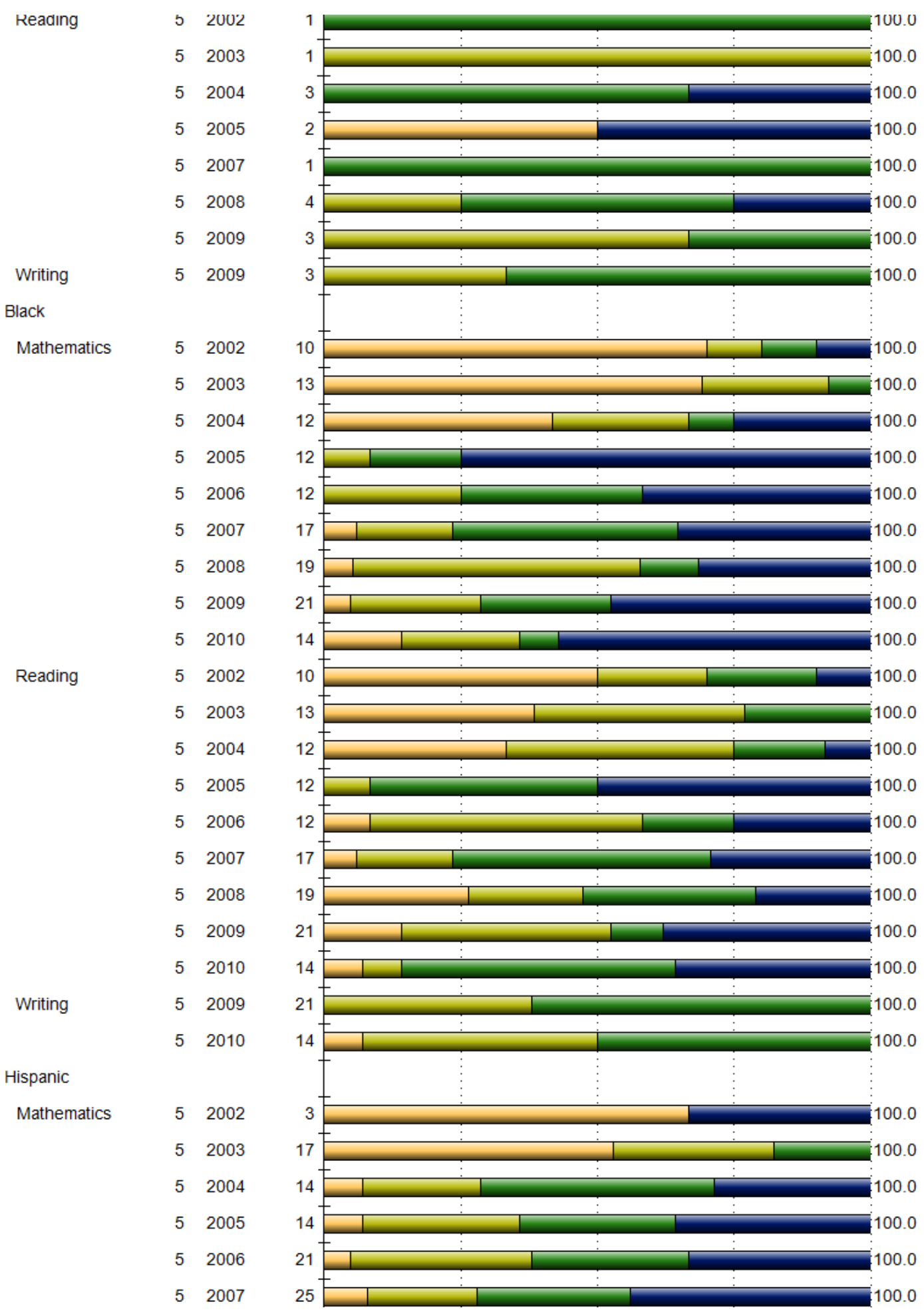
# PSSA + PSSA-M + PASA

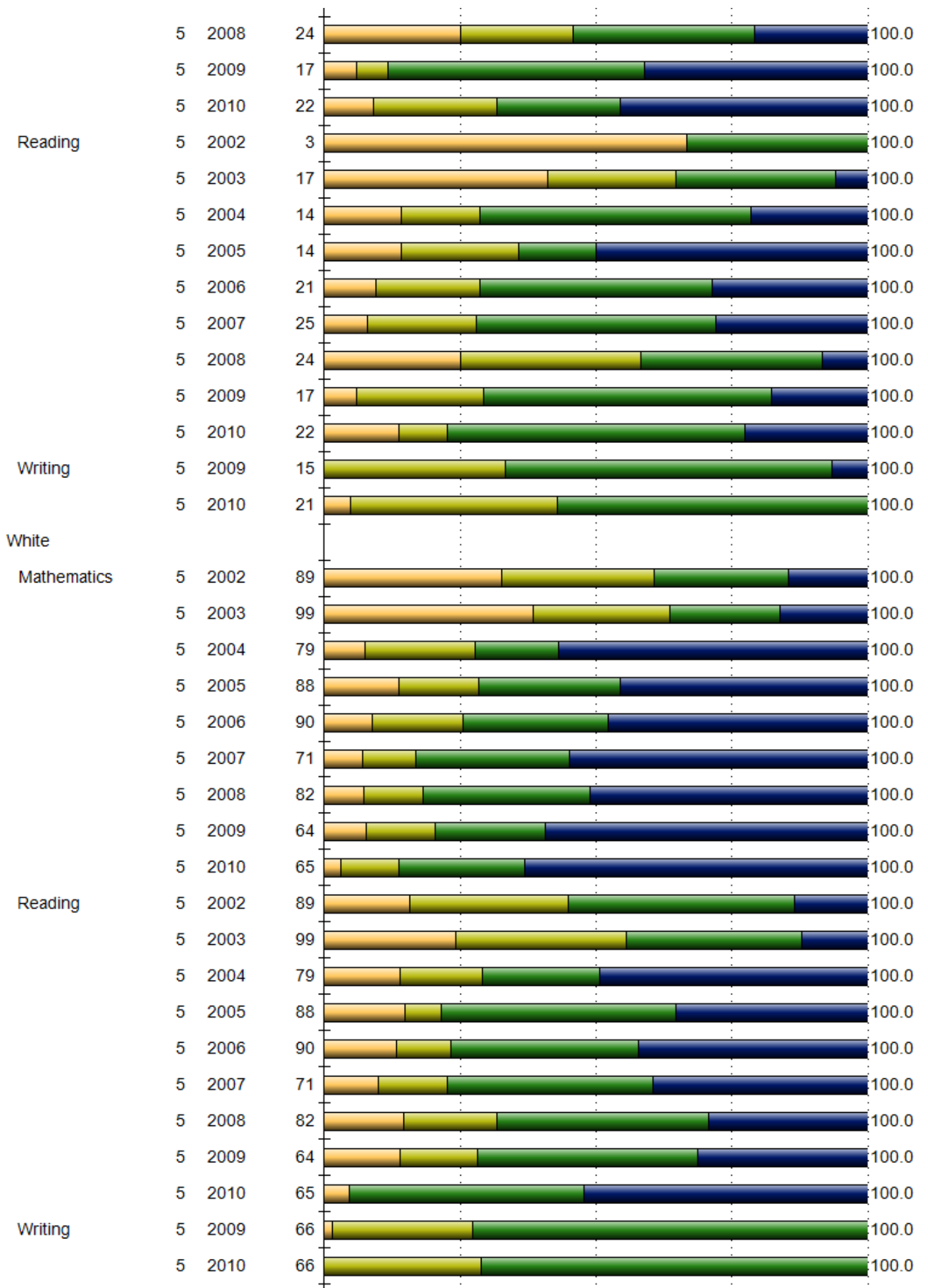
## Graphical Summary: Performance Levels

Beginning in 2010: In addition to the PSSA results, the summary calculations also include students' earned scores from the PASA and PSSA-M assessments.

Percent of Students Below Basic, Basic, Proficient, Advanced.  
Showing all full academic year students.

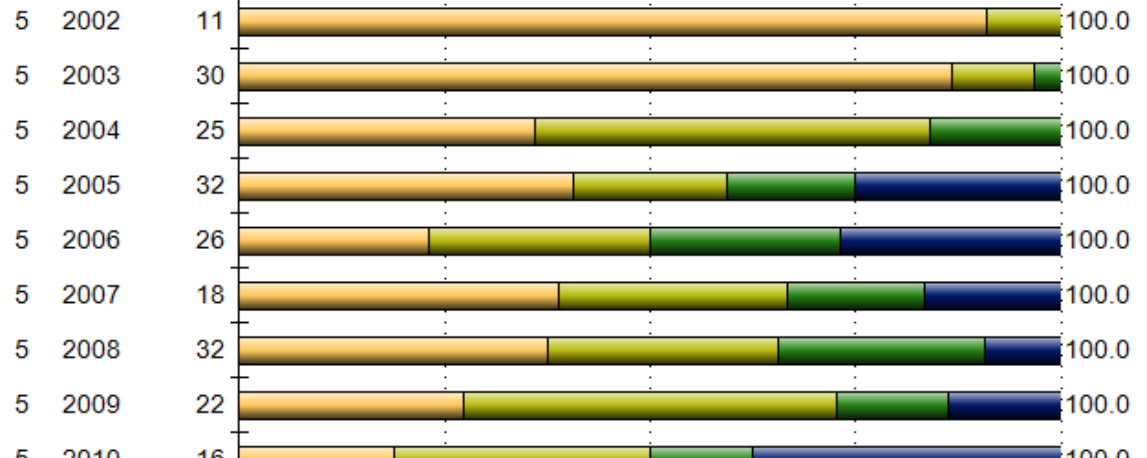




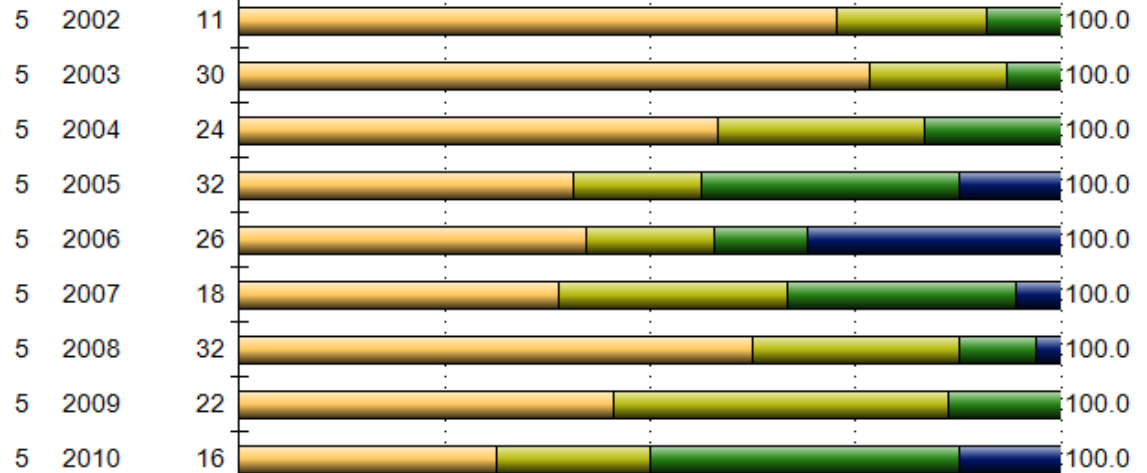


IEP

Mathematics



Reading

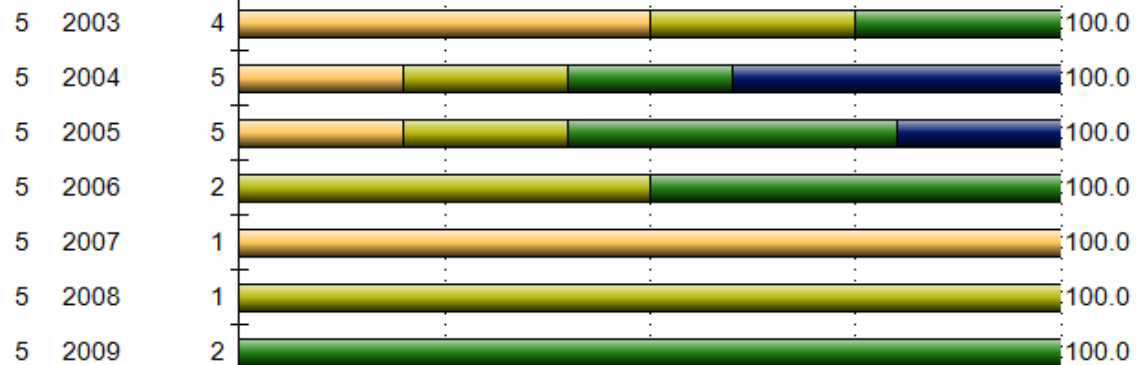


Writing



LEP

Mathematics



Reading

