

TECH UPDATES

Check It Out:

If you missed our Tech Updates Roadshow at the start of the year, here are the updates we covered. Contact tech.coaches@esasd.net with questions. We are more than willing to help get you answers!

Contents:

- New District website
- Moodle 2.2 upgrade
- Updated Content Filter
- Copyright & Photos
- Much, Much More!

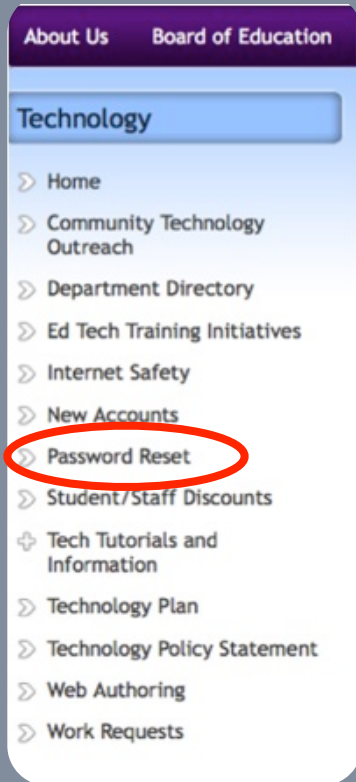
OUR DISTRICT HAS A NEW HOME

Since the start of the summer, our ESASD.net website has undertaken a facelift. Take a look below to see what the new website has to offer you, your students and their parents.

East Stroudsburg Area School District has a new home on the web. This summer our district's website changed its face and features. As you have probably already experienced, the district and all schools have individual webpages that are similar in format. The calendar you notice on each school's page is independent of the calendar on the district's home page. Submitting events to your building's calendar takes place through your principal, who was trained with one other building representative. If there is something you want on the district's main calendar, ask your principal to forward it on to Patricia Rosado, Mrs. Laverdure's secretary, for approval. This protocol is the same for events, pictures, highlights and such. Take the time to showoff what you and your students are up to in the classroom.



PASSWORD RESET



Resetting Your Password

Every 365 days, teachers and students are required to change passwords. It is a very easy process; many of us will be prompted the first time we log into a district computer. However, if you want to know how to change it manually in the future, just go to the District Homepage, click on Departments, click on Technology and then select Password Reset from the list (see above).

*Teachers are required to change to a new password while students may keep their old password.

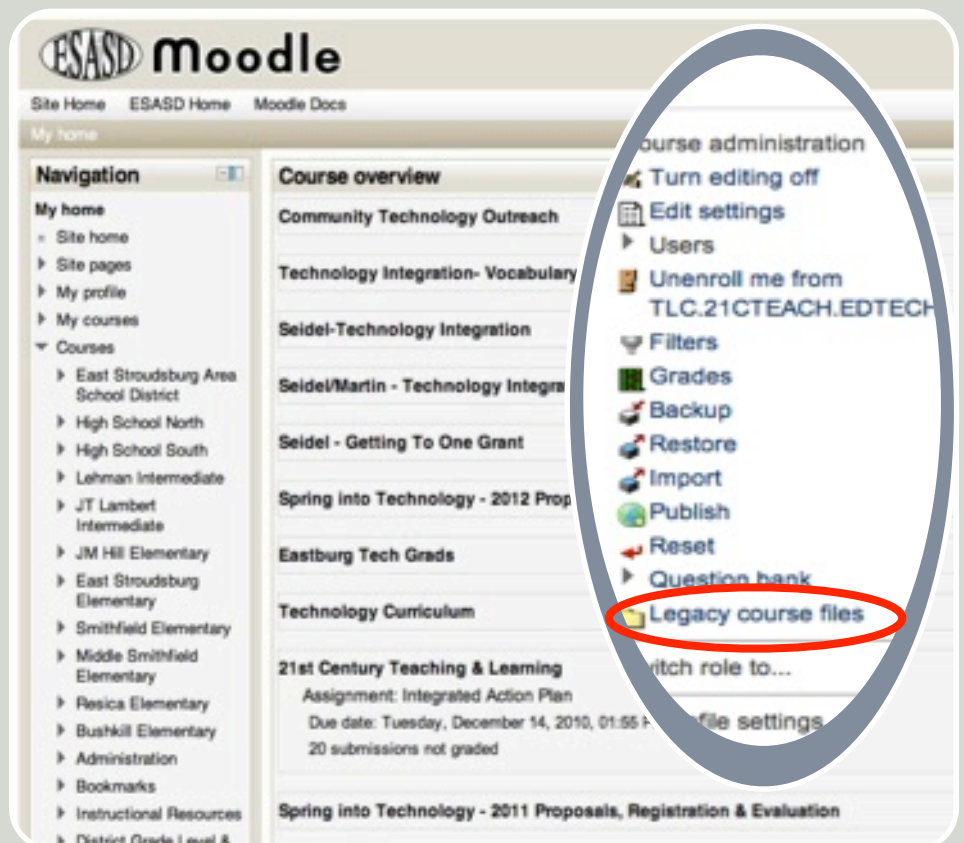
MOODLE 2.2

New, Improved & Ready for Business!

It's new and improved but it looks a lot different...fear not!

Over the past few weeks, our Moodle server and software have been updated. With all of these upgrades, confusion by the user is inevitable. First you will find that your course page looks different. To fix this, you can go into your Settings for the course and choose a new Theme under Force Theme. There are many to choose from which will remedy many of the visual issues you might be seeing when you log into the page. The next concern many users have is "Where are all of my Moodle files?" If you go into the

Settings tab of the Course, you will see Legacy Course Files (see inset). This is your folder for all previously uploaded files. Finally, the issue most of us want resolved is "How do I upload a file?" This is done in the same manner as before; however, now you can choose from a variety of places. If you want to grab something from your Legacy Course Files, you will go under the first tab in the File Picker, labeled Server Files. Once in there, you will see the Legacy Course Files folder. In addition to these visual changes, Moodle 2.2 has loads to offer. Stay tuned for email about upcoming trainings!



MAC LOGIN

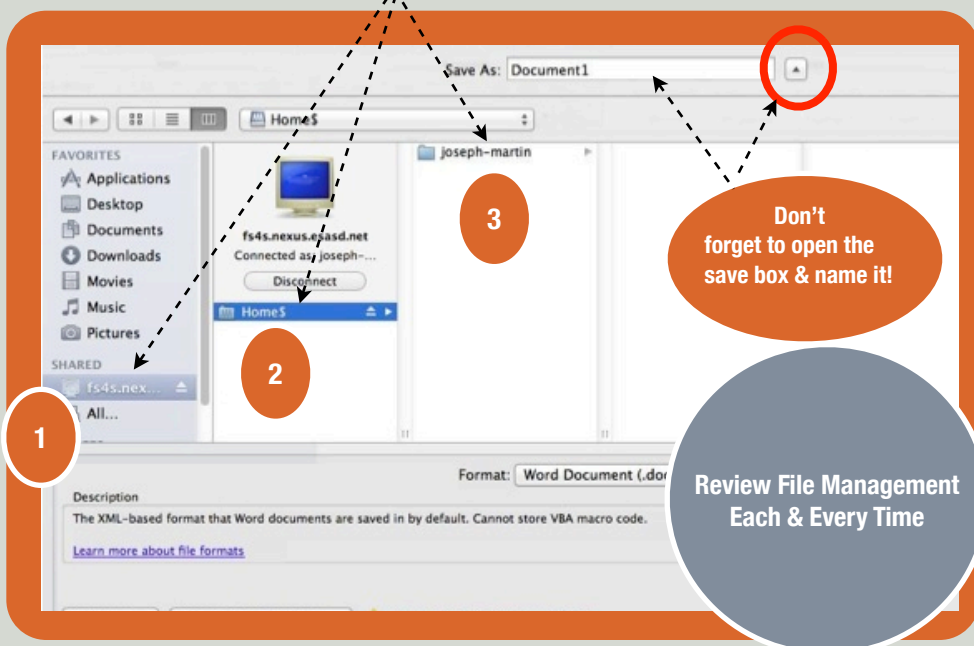


Green is Go...Not Anymore!

Many district Mac users got used to the Green Go button last year; things have changed. The Ready button on Mac login

now is red and disappears when network accounts are ready. Please have your students and yourself log in using your district credentials this year. Saving to the network is now up and running (see below).

FILE MANAGEMENT



We need to teach our students how to save...each & every time!

We assume that our 21st Century students know how to save a file. Unfortunately, NOT! Take the time to go

over saving files with your students each and every time you are working on a computer. If you need assistance with how to do this, contact a tech coach for individual assistance. If we work as a team, we will achieve more.

EDTECH RESOURCES

Looking for tech help?

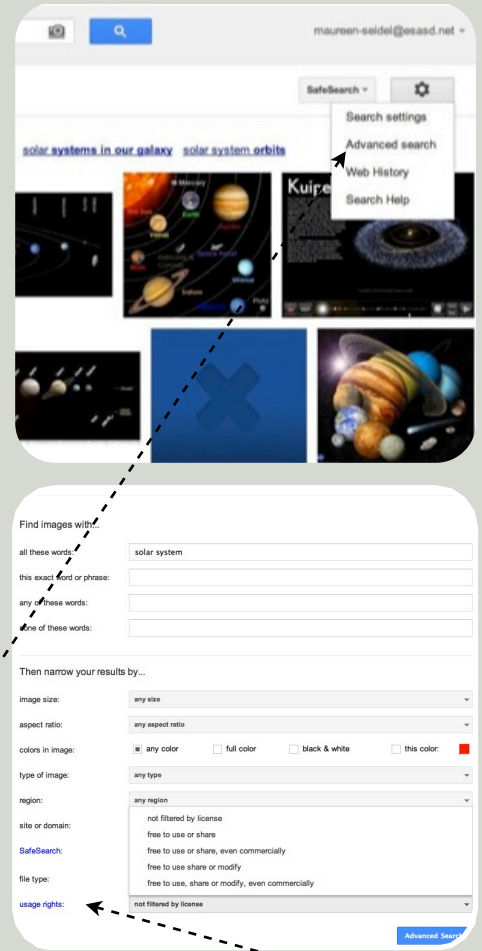
Tech help is just a click away. There are resource pages available for all common technologies used within the district. These pages include videos, tutorials, examples & best practices. Go to the District Homepage, click on Instructional Resources, click on Ed-Tech Resources and then select the technology you're using. Also, remember that you can always contact a coach at tech.coaches@esasd.net

Instructional Resources

- > Subscription Sites
- > Learning Links
- > Valuable Videos
- o Library Databases
 - > Elementary
 - > Intermediate
 - > High School
- > Ed-Tech Resources

- EdTech - iPod/iPads for Instruction
- EdTech - Moodle 2.2
- EdTech - QR Codes
- EdTech - Read Write 4 Gold
- EdTech- Infographics
- EdTech-ActivInspire/Promethean
- EdTech-Classrooms for the Future
- EdTech-Copyright/Fair Use
- EdTech-Digital Storytelling

COPYRIGHT & IMAGES



Copyright & Digital Citizenship: What you need to know when gathering images

Ask any student to find and download an image for you and they can all basically do it. Ask them which images are legal to download and they won't know. Many of us understand the ramifications of using copyrighted content, but teaching that to our students seems time consuming and unappreciated. Google is helping take the pain out of teaching our students about copyright infringement. Thanks to the Advanced Search Cog Wheel in Google Images, figuring out which pictures are copyright-free is a breeze.

Begin every image search in Google. Once the student has pulled up the page with numerous images, ask him/her to click on the cog wheel in the upper right-hand corner of the screen. This will

produce a drop-down window that offers an Advanced Search. Have them click on Advanced Search and they will see a new window appear.

This window provided MANY choices when retrieving images from the Internet: size, ratio, color, type, file format. However, the selector we are most interested in is the one titled "Usage Rights." Have your students click on Usage Rights and select "Free to use or share" from the drop-down menu, then click Search. This will retrieve only copyright-free images from the Internet. Please be aware that sometimes our Content Filter blocks many of these images because of the photo hosting sites, so there will be times when results are minimal.

Explain and encourage your students to search for images in this manner.

Let's make our students responsible learners!

ESASD>INSTRUCTIONAL RESOURCES>VALUABLE VIDEOS	LIGHTSPEED - YOUTUBE	KHAN ACADEMY	DISCOVERY STREAMING
	<p>ESASD Educational Video Library This library is designed to house approved YouTube videos for access by all in & out of the district. Tutorials for viewing & submitting can be found at www.esasd.net/lightspeed</p>	<p>Khan Academy This collection houses higher level, academic videos.</p>	<p>Discovery Streaming This is the link to United Streaming videos.</p>